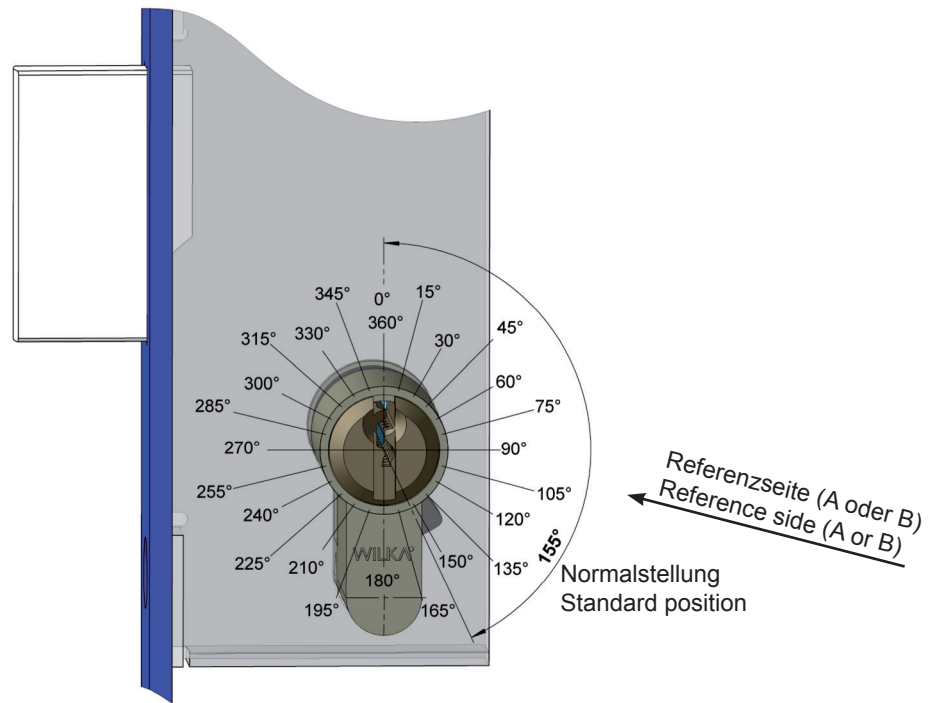


Wichtige Hinweise

Important notes



Schließbartstellung

Standard Profilzylinder:
- Schließbartstellung 155°
- rechts und links verwendbar

Artikel 1410, 2110, 3610:
- 8-fach einstellbarer Schließbart
(in 45°-Schritten)

Sonderausführungen der
Art. Nr. 1400, 1481, 1488, 2122, 2181, 2188
3600, 3681, 3688:
- beliebige Schließbartstellung lieferbar
- bitte Schließbartstellung (Gradzahl siehe Skizze) und
Referenzseite (A oder B) angeben

Cam position:

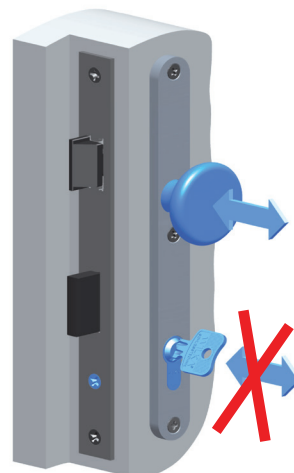
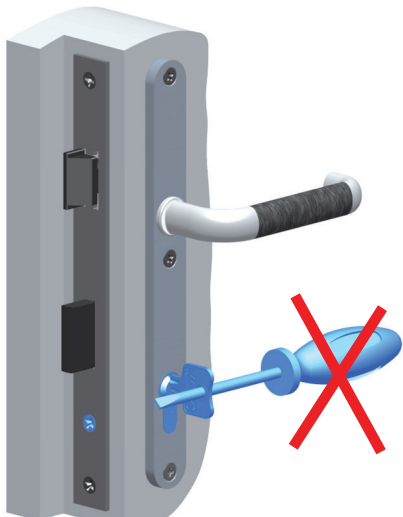
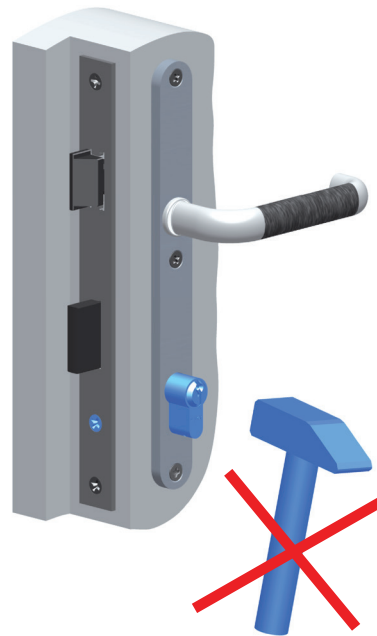
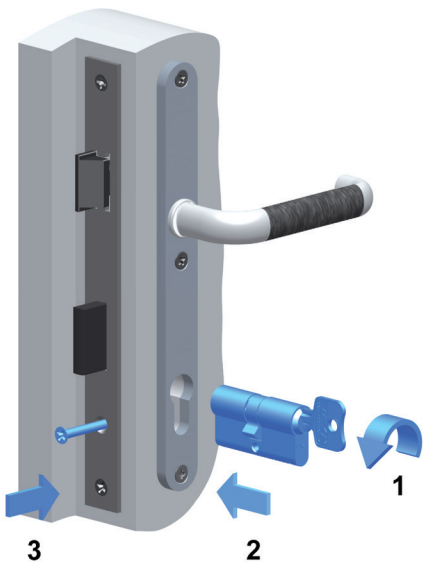
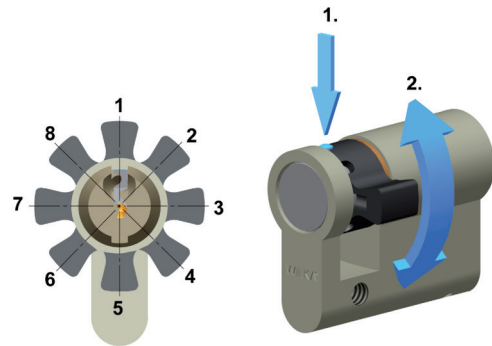
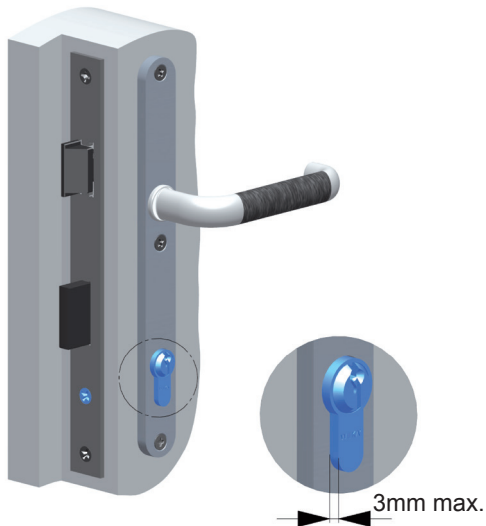
Standard profile cylinder:
- cam position 155°
- suitable for right and left

Article 1410, 2110, 3610:
- adjustable cam for 8 positions
(in steps of 45°)

Special designs of
Art. No. 1400, 1481, 1488, 2122, 2181, 2188
3600, 3681, 3688:
- any cam positions available
- please specify cam position (angle: see drawing) and
reference side (A or B)

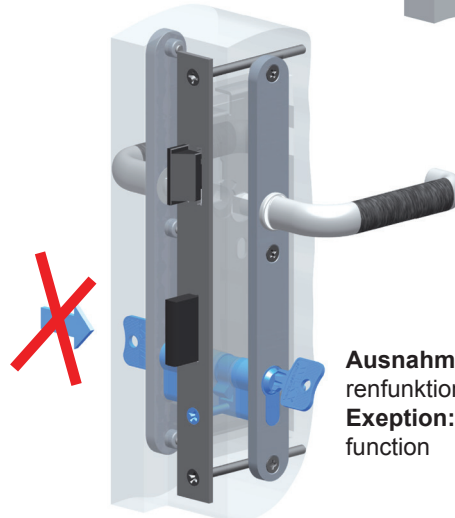
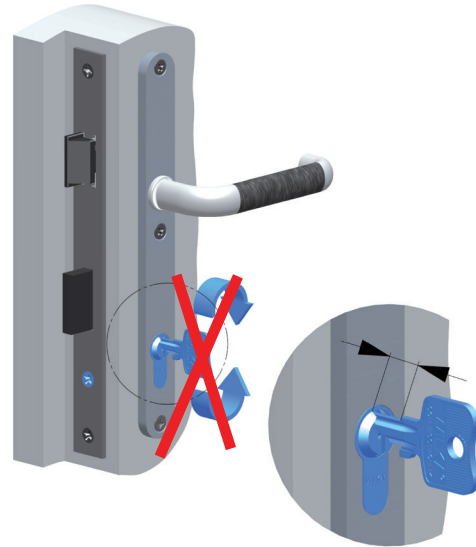
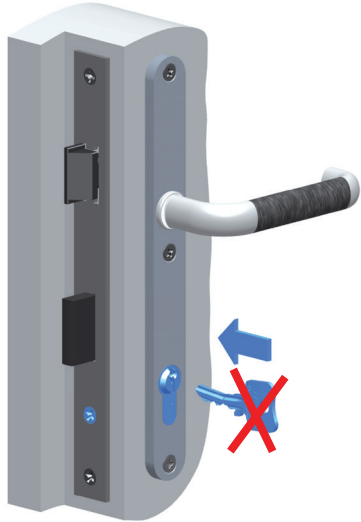
Gebrauchshinweise

Using details



Gebrauchshinweise

Using details



Ausnahme: Not- und Gefahrenfunktion
Exception: emergency exit function



2x jährlich
twice a year

Achtung: Graphit und Spray nicht kombinieren!
Attention: do not combine graphite and spray!

AEMA-Cleaner

oder/or

Graphit (nicht bei Standardzylindern / not for standard cylinders)